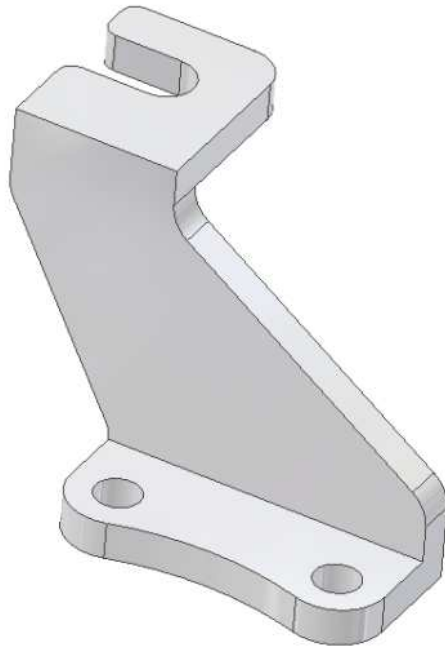


KARCEPTS

ENGINEERED SOLUTIONS



Installation Instructions for Part #: KTC01 & KTC02 **K20A Billet Throttle Cable Bracket** **for K-Powered EG's, EK's, DC2's, & EF's**

This bracket provides the SOLUTION for installing a K20A (ITR/CTR/Euro R) cable actuated throttle body into a K-Powered EG, EK, DC2, or EF while:

- Enabling usage of a short OEM throttle cable (Acura 17910-ST7-L01) for swap cleanliness
- Eliminating throttle cable/bracket interferences (with fuel lines, hoods, hoses, etc.)
- Comprised of high quality billet 6061-T6 machined aluminum

Karcepts, Inc.
www.karcepts.com
sales@karcepts.com

Parts Included

DESCRIPTION	QTY
THROTTLE CABLE BRACKET	1

Tools Required

Wire-Cutting Pliers

10mm Socket

12mm Open-End Wrench

Additional Parts Needed

Acura P/N: 17910-ST7-L01 GSR Throttle Cable

Note: Read all instructions before attempting installation. If you do not believe you are qualified in performing the necessary installation and modifications, please find an experienced professional who can. Karcepts, Inc. will not be held responsible for improper modifications to your throttle cable.

1. MODIFYING THE GSR THROTTLE CABLE

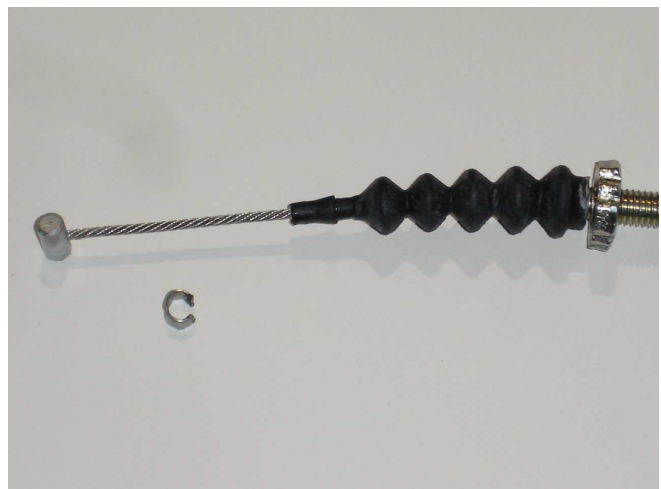
1. Obtain a 94-01 Acura GSR throttle cable (Acura P/N: 17910-ST7-L01).



2. Slide the metal retaining ring off of the throttle cable boot.



3. Use wire-cutting pliers to cut a slit in the retaining ring for removal from the throttle cable. Be cautious not to damage the throttle cable wire when cutting.



1. MODIFYING THE GSR THROTTLE CABLE (continued...)

4. Use scissors to trim your throttle cable boot as shown. The area to cut is after the second bellow, leaving three bellows remaining on the boot. Again, make sure not to allow the scissors to mar the steel braided throttle cable wire.



Modified 94-01 Acura GSR throttle cable ready for use shown below:

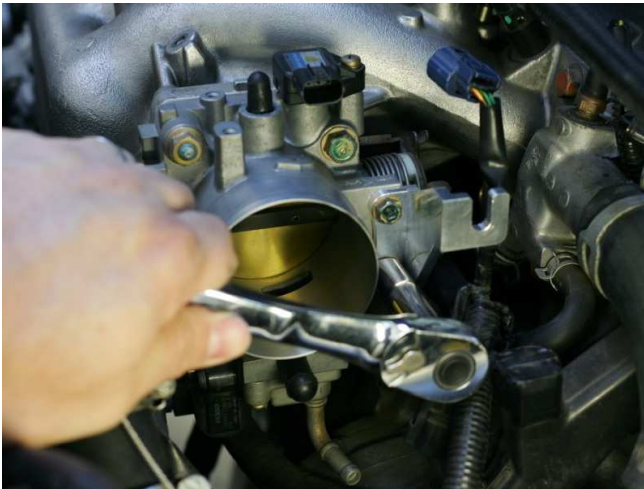


2. BRACKET INSTALLATION

1. Loosen the two M6 factory throttle cable bracket bolts with a 10mm socket and remove the factory throttle cable bracket.



2. Attach the billet throttle cable bracket (46mm tall bracket for EG, DC2, & EF; 53mm tall bracket for EK) by re-using the factory M6 bolts. Use a 10mm socket to tighten.



3. CHASSIS INSTALLATION

1. Insert the 94-01 Acura GSR throttle cable into the fire wall of the vehicle and connect to the pedal. Then install the throttle cable to the throttle body and tension and adjust throttle cable slack per the Honda/Acura service manual specifications.



2. Proper throttle cable tension should be easily achievable throughout the adjustment range of the GSR throttle cable with the Karcepts throttle cable bracket. If for any reason there is inadequate adjustment for proper tensioning, your pedal stop may additionally need adjusting. This is extremely rare and may only need to be performed if the pedal stop had previously been adjusted on your vehicle.



**CONGRATULATIONS! YOUR THROTTLE CABLE BRACKET
INSTALLATION IS NOW COMPLETE!!!**



Disclaimer/Warranty:

Due to the nature of high performance applications, Karcepts, Inc. products are sold without any warranty of merchantability or fitness or purpose, express or implied. It is expressly understood and agreed between Karcepts, Inc. and purchasers that as part of the bargain between Karcepts, Inc. and purchasers, consideration of doing business with each other, all purchasers take, select, and purchase said products and services from Karcepts, Inc. "as is" and "with all faults" and Karcepts, Inc. shall provide purchaser with a full and complete opportunity to examine parts, inventory or services when purchasing from Karcepts, Inc. Karcepts, Inc. shall not under any circumstances, be liable for any special, incidental, or consequential damages, including, but not limited to, damages or loss of other property of equipment, loss of profits or revenue, cost of purchased or replacement goods, or claims of customers of the purchaser which may arise and/or result from the sales, installation or use of these parts.

Parts sold or manufactured by Karcepts, Inc. may not meet legal requirements for use on public roads. It is the user's responsibility to know and comply with all local and federal laws and regulations. Use or installation of Karcepts, Inc. products may affect user insurance and/or vehicle warranty coverage. It is the user's sole responsibility for consequences that may occur due to having the product installed in his/her vehicle.

Karcepts, Inc. assumes no legal responsibilities and/or liabilities, whether to user's vehicle, engine, person(s), and/or property(s), that result from the use of, or servicing of a vehicle of which a Karcepts, Inc. product has been installed/attempted to be installed, or to any other vehicle(s) and/or person(s), regardless of whether or not this product has any involvement directly or indirectly and/or liability, and/or whether or not proper installation has been carried forth.

Acquisition of a Karcepts, Inc. product will act as an acknowledgement of the legal disclaimer stated herein.